



WaterPORT

PORTABLE. PRESSURIZED. WATER.



DAY TANK OWNER'S MANUAL



WaterPORT

PORTABLE. PRESSURIZED. WATER.

Congratulations! You now own a WaterPORT™ Day Tank™, the world's premiere self-pressurizing vehicle water release system. With its rugged design, your Day Tank is sure to last you a lifetime of adventure.



Shown with optional accessories. Please see www.thewaterport.com for more.

MOUNTING OPTIONS

SELECT MOUNTING OPTION



BED RAIL MOUNT

A great location for those looking to keep their tank protected from exterior elements.

Mounts to any standard bed rail.



TRAILER HITCH MOUNT

This is our easiest and most accessible mount location.

Fits any standard 2" Trailer Hitch



BAR MOUNT

A great mounting option for those using the Daytank as a shower.

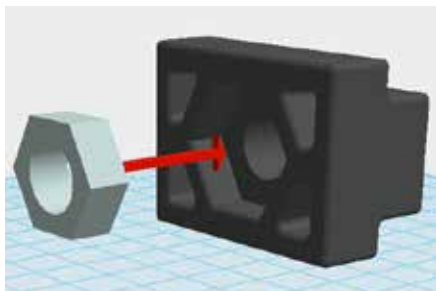
Fits any 1-1.5" bar

Visit www.thewaterport.com for other mounting options!



MOUNTING INSTRUCTIONS

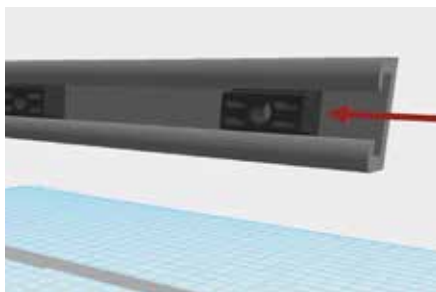
BED RAIL MOUNT



STEP 1

PREPARE T-NUTS

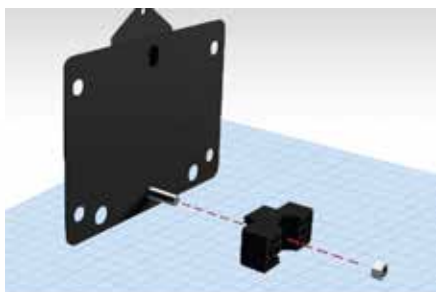
Insert 5/16" jam nut (thin nut) into the back of each T-slot nut.



STEP 2

INSERT INTO BED RAIL

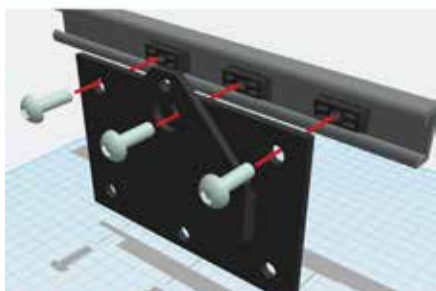
Insert the T-slot nut into the bed rail by sliding them into the front or back of your bed rail. Make sure they are aligned with the upper bolt holes on your mounting bracket.



STEP 3

ATTACH BRACE

Insert the 5/16" bolt through the bottom center of your universal mount. Slide in the 5/16" lock nut into the center of the plastic clamp. Tighten until the clamp is securely fastened to the universal bracket.



STEP 4

MOUNTING PLATE

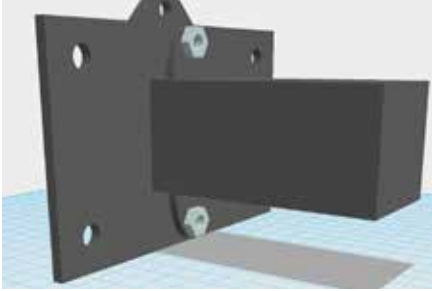
Once aligned, thread bolts through. Screw in all three 5/16" bolts into the T-slot nuts. Fasten screws until the mounting bracket is firmly attached to your vehicle's bed rails.

Always lock your tank in the mount while driving. Slide a bolt or padlock through the hole in the top of the mounting bracket to lock your tank in place.



MOUNTING INSTRUCTIONS

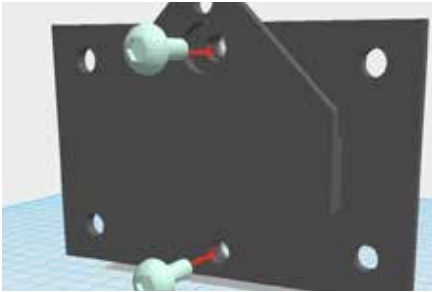
TRAILER HITCH MOUNT



STEP 1

ATTACH BAR AND BRACKET

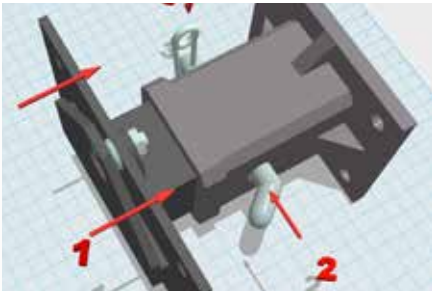
Position the hitch bar over the center holes of the mounting bracket.



STEP 2

LOCK INTO POSITION

Fasten the hitch bar by using two 5/16" bolts and two lock nuts.



STEP 3

INSERT INTO HITCH

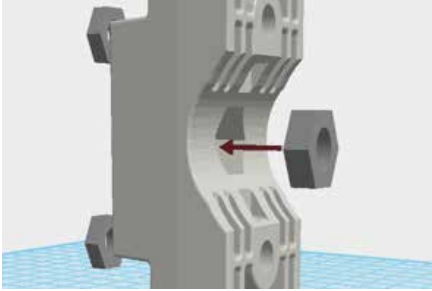
Insert the hitch bar into your standard 2" hitch receiver, ensuring the holes are aligned for your cotter pin. Insert the provided cotter pin through the receiver hole, make sure clip is securely attached.

Always lock your tank in the mount while driving. Slide a bolt or padlock through the hole in the top of the mounting bracket to lock your tank in place.



MOUNTING INSTRUCTIONS

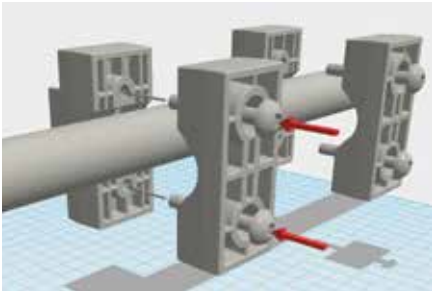
BAR MOUNT



STEP 1

PREPARE CLAMPS

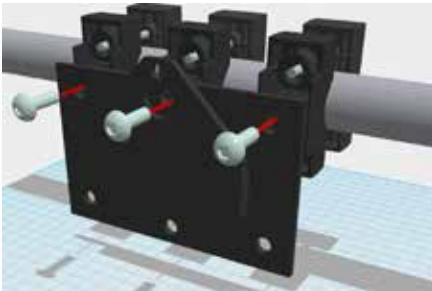
Insert the 5/16" lock nut into the center of Clamp A. Insert 1/4" nuts to both the top and bottom holes of Clamp A.



STEP 2

SEAT CLAMPS ON BAR

Once all 3 clamps are securely fastened, connect the mounting bracket to the clamps using three 5/16" bolts.



STEP 3

MOUNTING PLATE

Fasten clamp A and clamp B around the bar using the long 1/4" bolts. Before tightening, check to confirm the bar clamps line up with the 3 holes in the mounting bracket. Once aligned, use the provided allen wrench to tighten the clamps firmly to the bar.

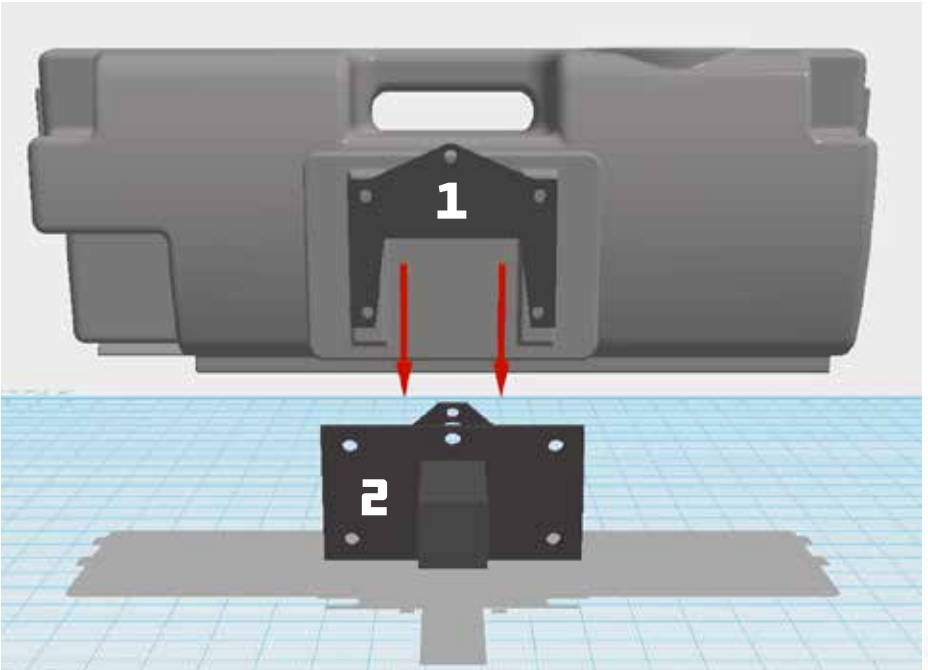
Always lock your tank in the mount while driving. Slide a bolt or padlock through the hole in the top of the mounting bracket to lock your tank in place.



MOUNTING INSTRUCTIONS

CONNECTING TANK TO MOUNT

Once you have selected your mounting location and securely fastened the Back U-Bracket (1) to the Day Tank™, you will need to join both mounts by sliding the Day Tank down onto the Universal Mounting Plate (2). To remove, lift your Day Tank upward and slide the tank off of the mounting plate.



Always lock your tank in the mount while driving. Slide a bolt or padlock through the hole in the top of the mounting bracket to lock your tank in place.



FILLING INSTRUCTIONS

QUICK CONNECT FILLING

STEP 1 REGULATOR

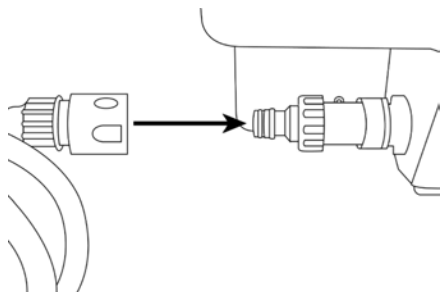
Attach your regulator to your home's garden hose, making sure the valve is in the OFF position.



WARNING: Do **NOT** connect the regulator directly to the tank. Doing so will void your warranty.

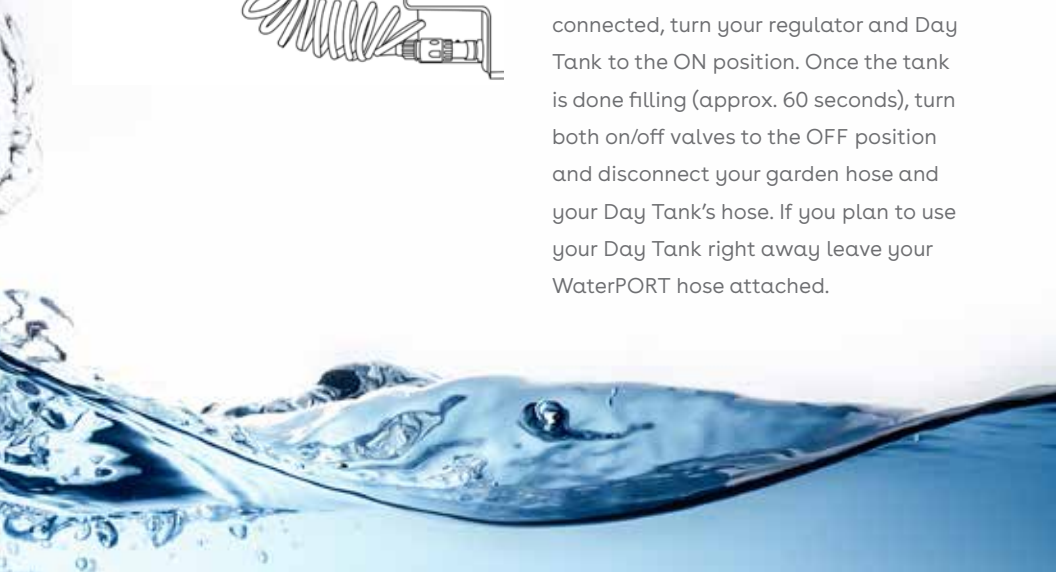
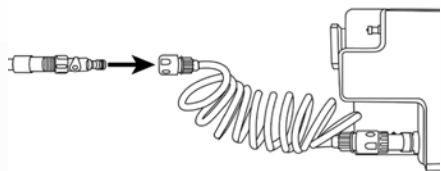
STEP 2 CONNECT TO TANK

Attach your WaterPORT hose to your Day Tank making sure you hear a click. Once attached, make sure your Day Tank valve is in the OFF position.



STEP 3 CLICK AND FILL

Insert your regulator into your Day Tank's hose, making sure you hear a click. Once connected, turn your regulator and Day Tank to the ON position. Once the tank is done filling (approx. 60 seconds), turn both on/off valves to the OFF position and disconnect your garden hose and your Day Tank's hose. If you plan to use your Day Tank right away leave your WaterPORT hose attached.



FILLING INSTRUCTIONS

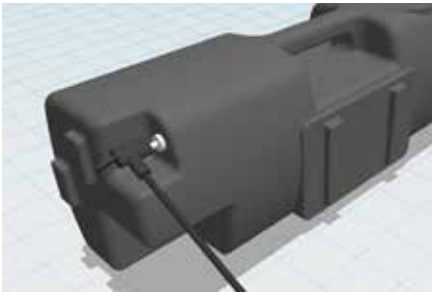
MANUALLY FILLING



STEP 1

FILL WITH WATER

Remove large top cap and fill 85% of the tank with water, leaving 15% air for pressurization.



STEP 2

RE-PRESSURIZE

Re-pressurize using the schrader valve located on the side of the tank. Pump air into the tank using a compressor or bike pump. **Do not exceed 40 p.s.i.**

BASIC USAGE

WHAT SHOULD I USE IT FOR?

Once you have chose your mounting location and securely fastened the mounting bracket(1), you will need to join both mounts by sliding the WaterPORT™ Bracket(1) down into the Mounting Bracket(2). To remove, lift your WaterPORT™ upward and slide the tank out of the mounting bracket.

- Rinsing Off Your Gear
- Showering Off
- Emergency Water Source
- Washing Pets
- Cleaning Your Camping Dishes
- Surfing & Fishing

And anything else that requires running water...



DON'T VOID YOUR WARRANTY



CORRECT



WRONG

Never connect your fill valve directly to the tank. The pressure regulator only works in one direction and must be attached to your HOME GARDEN HOSE (see the previous page). Attaching your REGULATOR to your Day Tank will void your warranty.

ADDITIONAL INFORMATION

FREQUENTLY ASKED QUESTIONS

WHY IS MY TANK NOT HOLDING PRESSURE?

Your Day Tank™ is designed to hold pressure for up to 3 months without use. If your Day Tank has lost pressure it could be due to parts being loose. Make sure all parts are securely fastened to the system. Hand tighten your 2 inch cap to insure that the O ring has created an airtight seal. Make sure your on/off valve is tight and the valve remains in the off position when not in use.

WHY DOES MY TANK HAVE LOW PRESSURE AFTER FILLING?

If your relief valve opens, it will release most of the tanks pressure. If this happens, you will need to completely refill your tank. Empty your tank of all its water, then reconnect the hose to fill and re-pressurize.

WHY IS MY TANK NOT SPRAYING WATER WHEN FULL?

First, check to see if your shut off valve is open. Second, make sure your tank is lying horizontal and on a flat surface so that water is able to flow out the hose port.

WHY DOES MY WATER PRESSURE ONLY LAST 30 SECONDS WHILE SPRAYING?

This is likely due to having left over water in the tank when refilling. In order for the tank to fully pressurize, you need to completely empty the water out of the tank before each refill.

HOW DO I PROPERLY MOUNT MY TANK TO MY VEHICLE?

Visit thewaterport.com/videos to view our How-To videos

HOW DO I LOCK MY DAY TANK TO THE VEHICLE MOUNT?

While your tank is resting in the vehicle mount, locate the hole in the tip of the mounting bracket, and slide a padlock through. The lock will block the tank from being removed.

CAN I DRIVE WITH MY TANK PRESSURIZED?

Yes, of course you can. It would defeat the point of the Day Tank if you couldn't do that!

ADDITIONAL INFORMATION

PRO TIPS

ADD HOT WATER:

To add hot water simply unscrew your 2" cap and add hot water from your home faucet. Fasten the cap and re-pressurize the tank by using the schrader valve and a bike pump. The Insulated tank will keep water hot up to 4 hours.

KEEPING WATER COLD FOR DRINKING:

The Day Tank's 2" cap is large enough for ice fill. The insulated tank will keep ice up to 4 hours.

SUNLIGHT CAN BE USED AS A HEAT SOURCE:

Place your tank in direct sunlight for 2-3 hours. Your tank's water temperature will increase by 10-15 degrees Fahrenheit.

SOAP IS YOUR FRIEND:

We recommend cleaning your system after every other use. To clean your system, add a few drops of dish soap through the top cap. Next, flush your system with your garden hose to be sure all soap has been removed. You may need to repeat the process to ensure the tank has been fully sanitized.

ADDING ADDITIONAL PRESSURE:

Locate the schrader valve on the side of the tank. Attach a bike pump or compressor, and pump air into the tank. **Do not Exceed 40 PSI.**

YOU CAN ADD ANY POTABLE LIQUID:

Your Day Tank can handle any potable liquid. From water to sports drinks, you now have the ultimate on board liquid dispensing system!

ADDITIONAL INFORMATION

WARRANTY

COVERED PRODUCT:

WaterPORT™ Portable Pressurized Water System and accessories.

LIMITATION OF DAMAGES:

In no event shall the manufacturer WaterPORT™, LLC, a California limited liability company be liable for consequential damages for breach of this warranty. Some States do not allow the exclusion or limitation of incidental or consequential damages, so the above limitation or exclusion may not apply to the buyer.

WARRANTY COVERAGE:

WaterPORT™, LLC warrants the Covered Product to be free of all defects in material and workmanship for 90 days from the date of original purchase. This warranty extends to the original buyer only.

Within the period of this warranty, WaterPORT™, LLC will repair or replace, free of charge, any part proving defective in material or workmanship. All warranty repairs and service must be performed by an authorized WaterPORT™, LLC technician.

All expenses related to replacing or repairing a defective part under this warranty shall be assumed by WaterPORT™, LLC except for the following expenses, which shall be assumed by the buyer: The cost of transporting the product to the WaterPORT™ Returns Department at the address listed below.

WARRANTY EXCLUSIONS:

- This warranty does not apply to any costs, repairs, or services for the following:
- This warranty does not apply to any costs, repairs, or services for the following:
- Repairs necessitated by use other than normal personal, family, or household use.
- Damage resulting from misuse, abuse, accidents, alterations, or improper installation.
- Damage arising from either road hazards or driving off road.
- Cosmetic damages including, but not limited to, scratches or discoloration.
- Damage arising from liquids other than water.
- Damage arising from high temperatures.

Corrective work necessitated by repairs made by anyone other than a WaterPORT™, LLC authorized service technician.

ADDITIONAL INFORMATION

WARRANTY

HOW TO OBTAIN WARRANTY SERVICE:

If the Covered Product needs to be returned, **please email sales@thewaterport.com to request an RA number.**

The buyer should then carefully pack the Covered Product, preferably in the original packing materials, and deliver it, together with a copy of the original purchase receipt and a description of the problem, to the following:

457 Deseret Drive Suite 1
Kaysville, UT 84037
Attn: WaterPORT Returns Department (insert RA number here)

IMPORTANT: Please include a return address

SHIPPING METHODS:

For your records, please select a tracked shipping method such as UPS, FedEx, or USPS to monitor the shipment of the Covered Product to the WaterPORT™ Returns Department. We recommend that the buyer insure the product being shipped. We accept no liability for Covered Products lost or misplaced in shipment.

30 DAY MONEY BACK GUARANTEE:

This warranty is in addition to the 30 day money back guarantee.

NOTICE TO BUYER:

This warranty gives you specific legal rights, and you may also have other rights which vary from state to state. You have the right to bring any action at law or equity to resolve disputes concerning or to enforce the provisions of this warranty.



WaterPORT

Copyright © 2023 WaterPORT. All Rights Reserved.

www.theWaterPORT.com